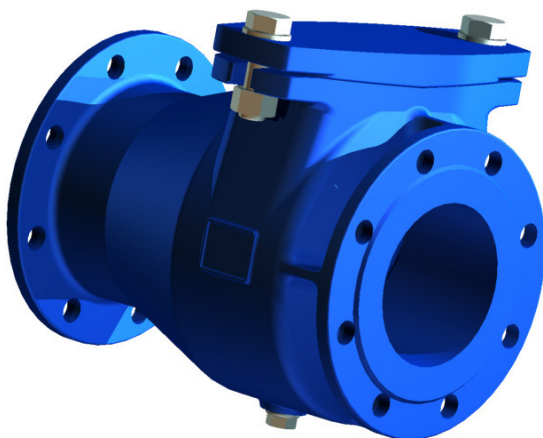


Soft seated check valve with rubber disc, low maintenance, with free passage, for drinking water and wastewater pipes and building and industrial plants

Futures:

- Face to Face acc. EN 558-1 Line 48 (DIN 3202/F6)
- Size: DN40 to DN500
- Flange connection acc. DIN EN 1092-2 PN10-PN16

- Low maintenance
- Soft seated disc
- Quiet operation
- With free passage



Material

- **Body:**
 - EN-JS 1030 (GGG 40)
other materials on request

- **Disc:**
 - EN-JS 1030 (GGG 40)
other materials on request

- **Disc gumming:**
 - EPDM KTW
 - NBR
other materials on request

- **Shaft:**
 - stainless steel
other materials on request

- **Bolts:**
 - stainless steel
other materials on request

Corrosion protection:

- EKB-powder coating, RAL5015 blue
other coating systems and RAL colors on request

Application:

- Water management
- Industry
- Process engineering
- Gebäudetechnik

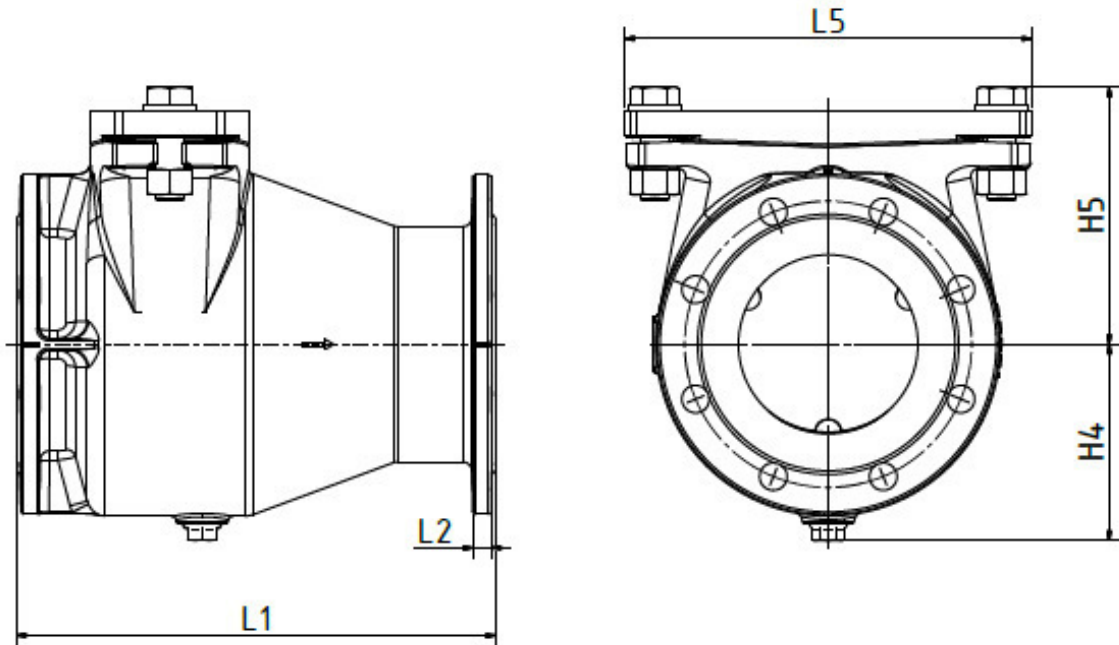
Accessuories:

- Lifting device

Our approvals



dimensions and weight



| Size DN | FTF L1 | L2 | L5 | H4 | H5 | Weight |
|------------|-----------|------|-----|-----|-----|--------|
| | mm | mm | mm | mm | mm | kg |
| 40 | 180 | 18 | 164 | 90 | 100 | 11 |
| 50 | 200 | 20 | 164 | 90 | 100 | 14 |
| 65 | 240 | 20 | 186 | 98 | 111 | 17 |
| 80 | 260 | 22 | 200 | 105 | 125 | 21 |
| 100 | 300 | 24 | 225 | 125 | 140 | 29 |
| 125 | 350 | 26 | 304 | 157 | 175 | 42 |
| 150 | 400 | 26 | 340 | 155 | 195 | 60 |
| 200 | 500 | 30 | 400 | 205 | 251 | 92 |
| 250 | 600 | 32 | 464 | 230 | 290 | 145 |
| 300 | 700 | 32 | 504 | 255 | 312 | 175 |
| 350 | 800 | 26,5 | 585 | 344 | 427 | 300 |
| 400 | 900 | 28 | 660 | 372 | 461 | 395 |
| 500 | 1100 | 31,5 | 770 | 424 | 530 | 613 |

Other diameter on request